



ERYC TAYLOR DANCE PRESENTS

FACTORY REFRACTORY

MEDIA KIT

WWW.ETD.NYC



ABOUT ETD

Eryc Taylor Dance is an internationally recognized nonprofit dance company whose outreach program curates over 20 weekly dance and movement workshops throughout NYC. ETD's achievements include performances at the 16th-18th International Avant-Garde Festival in Merida, Mexico with praise from El Universal for ETD's workshops with the local Mayan youth. ETD's 2019 EARTH about climate change was a momentous culmination of ETD's New Choreographer's Grant and was featured on PBS ALL ARTS in a series titled "Climate Artists."



ETD Repertory Reel





ABOUT FACTORY|REFRACTORY

CONCEIVED & DIRECTED BY ERYC TAYLOR

The story of a young, impressionable artist in a new city full of exhilarating passion and deadly vices. Factory Refractory is a multi-media, multi-sensory dance tribute to New York City and the artists who defined its nightlife in the mid-1990s. Experience an odyssey of art, addiction, recovery, and destiny.



Press Materials

VIDEO ADS

 **FACTORY|REFRACTORY - OFFICIAL TRAILER**

 **JUSTIFY MY LOVE - FALL 2022 TRAILER**

 **PHOTO GALLERY - SHANNEL RESTO**



CREATIVE TEAM

ARTISTIC
DIRECTOR



ERYC TAYLOR

[Read about Eryc](#)

MUSICAL
DIRECTOR &
COMPOSER



DANIEL TOBIAS

[Read about Daniel](#)

COSTUMES



SCOOTER LAFORGE

[Read about Scooter](#)

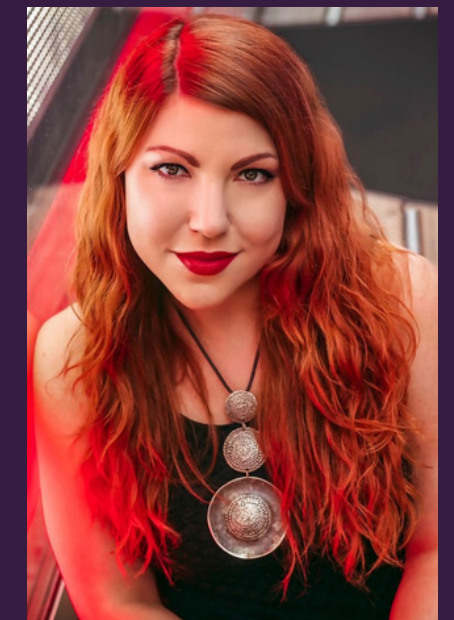
ASSOCIATE
CHOREOGRAPHER



**ALEX TENREIRO
THEIS**

[Read about Alex](#)

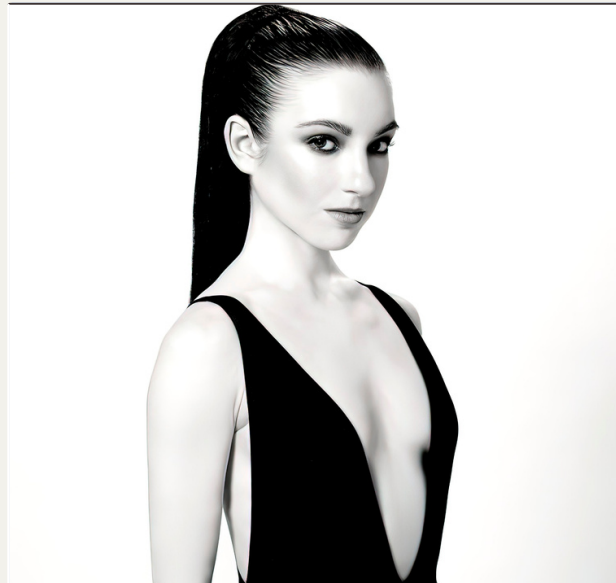
PUBLICIST



CINDY SIBILSKY

[Read about Cindy](#)

CAST



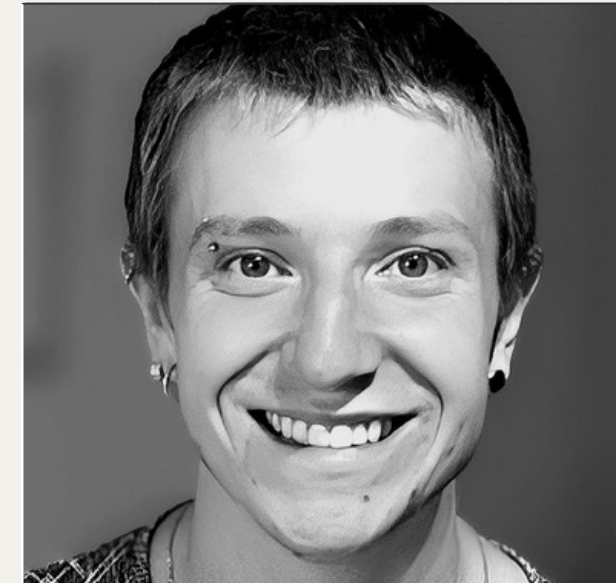
Principal Dancer
Taylor Ennen



Principal Dancer
Miranda Stuck



Principal Dancer
Sashalie Rios



Principal Dancer
Cameron Arnold



Corps Dancer
Tommy Batchelor



Corps Dancer
Julia Foti



Corps Dancer
Isoke Wright

PRESS



Cecly Placenti, The Dance Enthusiast

Where Factory/Refractory succeeds is in its homage to an era that was both decadent and tolerant, dark and light, and uniquely New York."

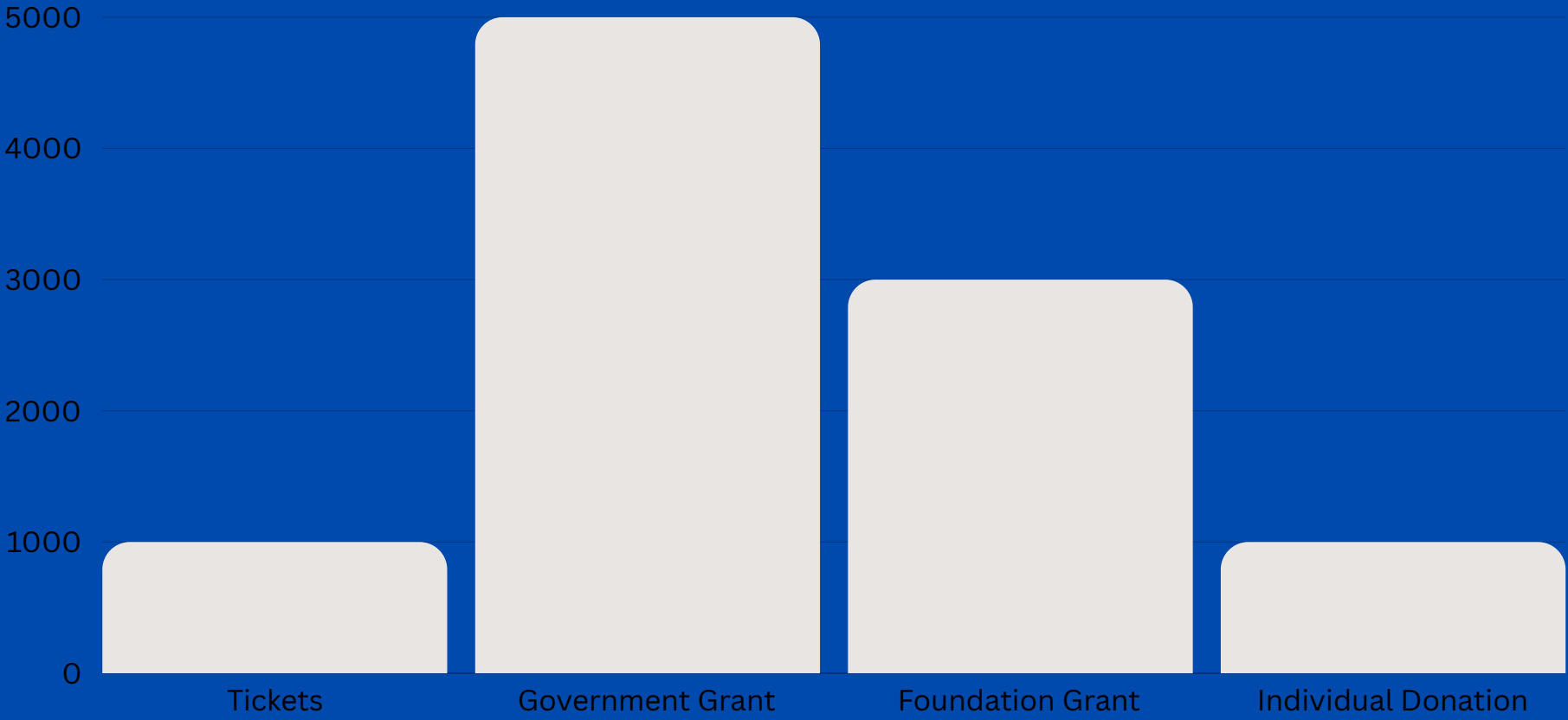


Stephi Wild, Broadway World

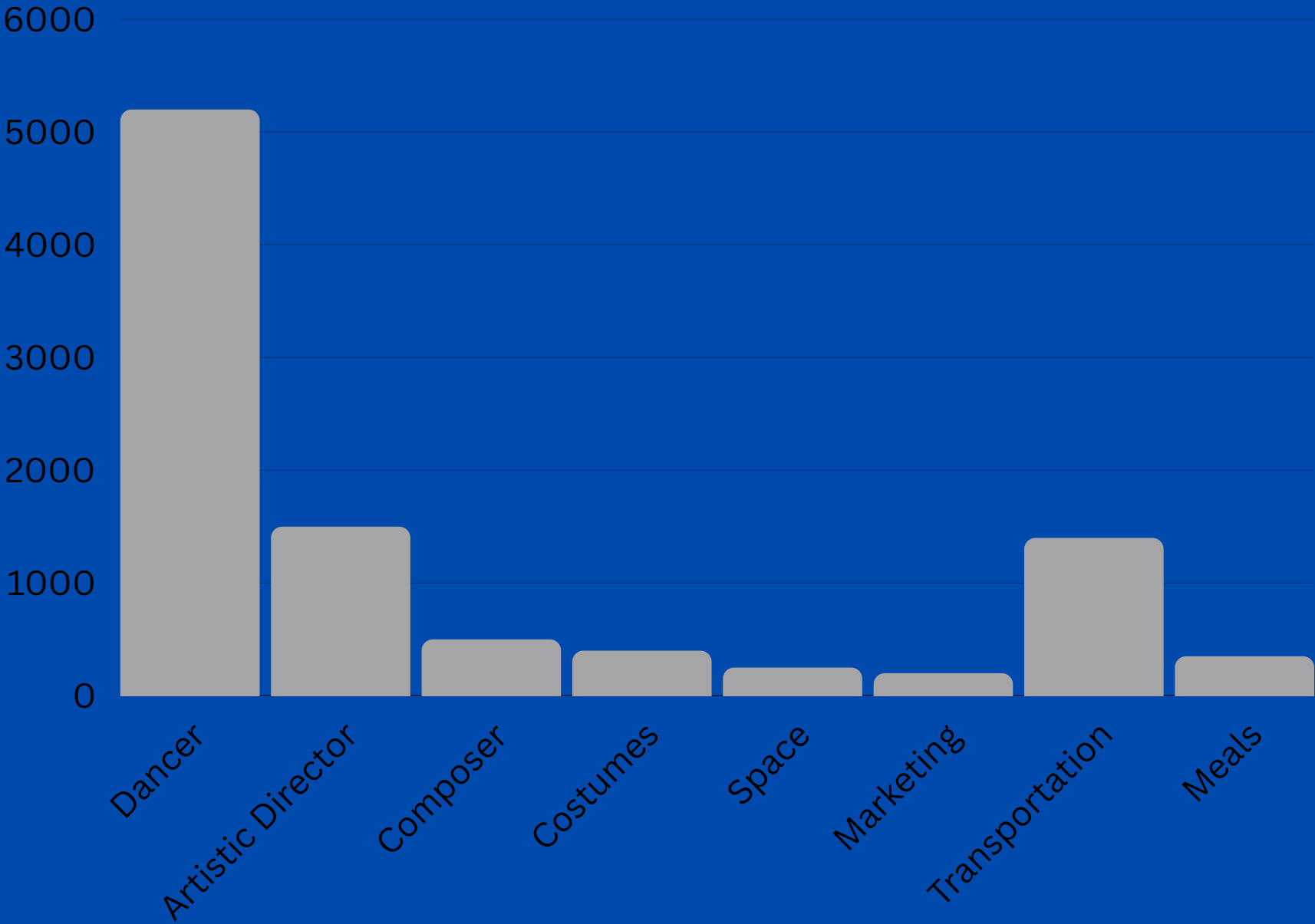
Factory/Refractory is a tribute to NYC's club kid scene and a nod to Andy Warhol's Factory events. The mid-1990s was an era popularized by dance club personalities, including Amanda Lepore, Richie Rich, and others still working in today's entertainment and fashion scene.

PROJECTBUDGET

INCOME: \$10,000



EXPENSES: \$10,000



SPONSORS & CONTACT



Factory|Refractory at SLATE NYC

NYC Cultural Affairs

MARTA HEFLIN
FOUNDATION

Shuttered Venue
Operators Grant
Program



NEW YORK
STATE OF
OPPORTUNITY
**Council on
the Arts**



/ERYCTAYLORDANCE

7K+ LIKES



@ERYCTAYLORDANCE

29K+ FOLLOWERS



@ERYCTAYLORDANCE

3K+ FOLLOWERS



ERYC TAYLOR DANCE

ETD.NYC | ETDOUTREACH.ORG
450 WEST 42ND ST, NYC 10036

(917) 701-7477
INFO@ETD.NYC

THANK'S FOR WATCHING

*TO BOOK FACTORY|REFRACTORY AT
YOUR VENUE, PLEASE CONTACT
PUBLICIST CINDY SIBILSKY.*

editor@etd.nyc



Repertory available for booking

